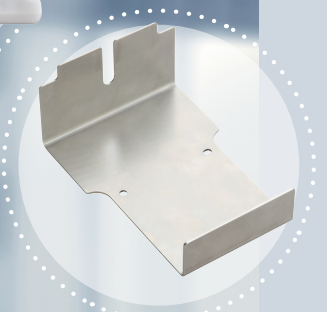




## AUTO spin System



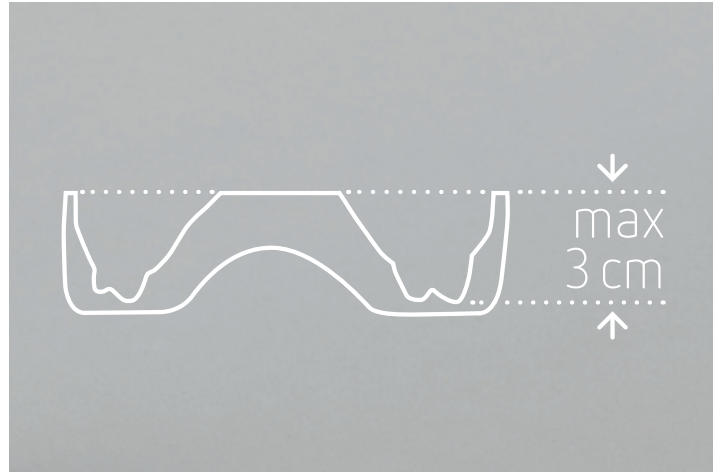
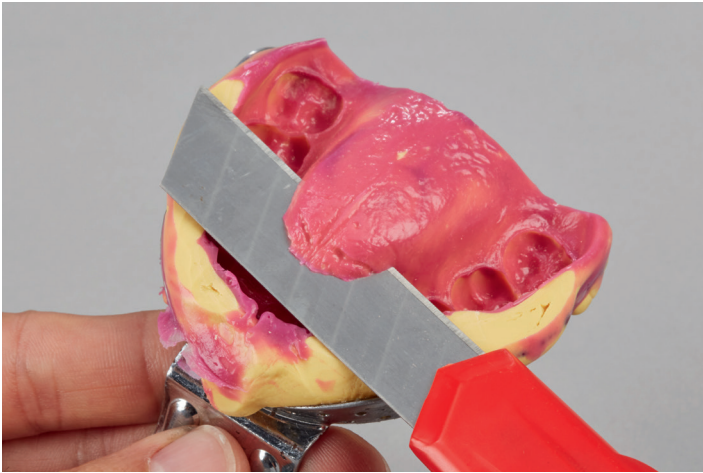
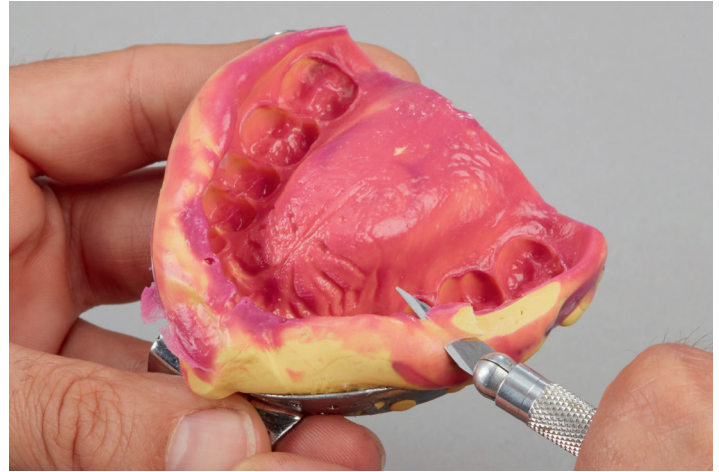
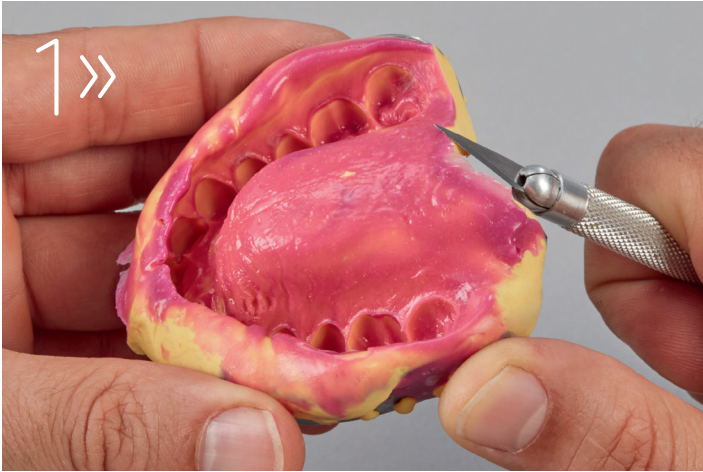


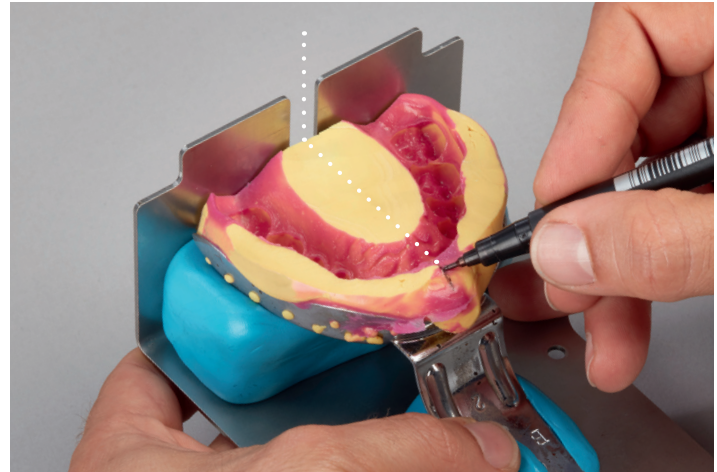
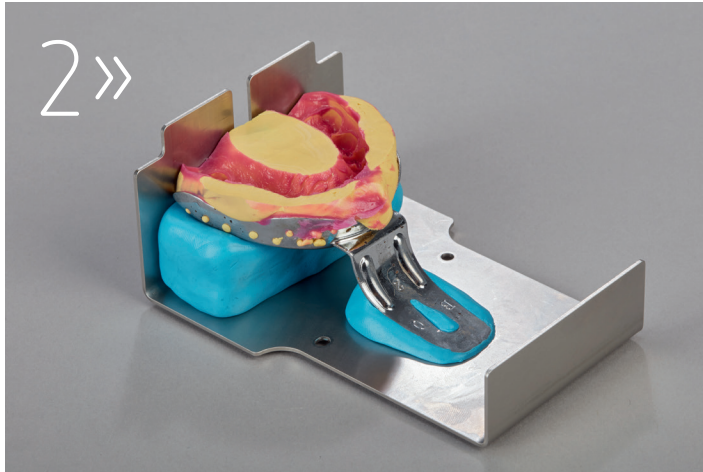
# AUTO spin

## System components

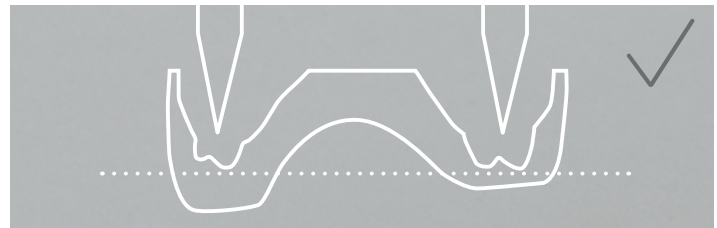
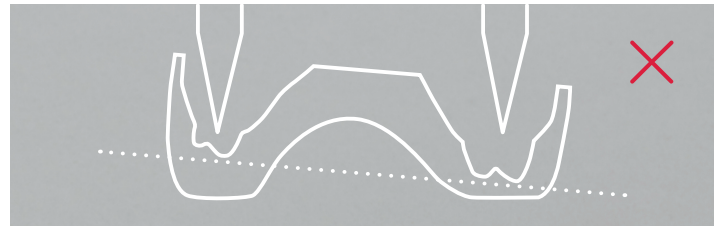
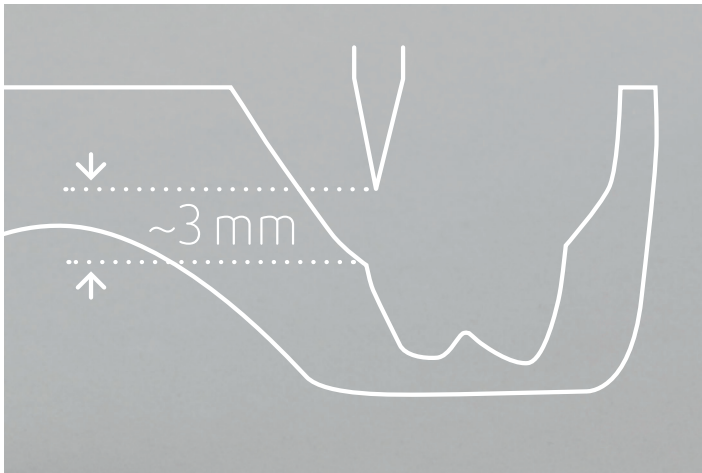
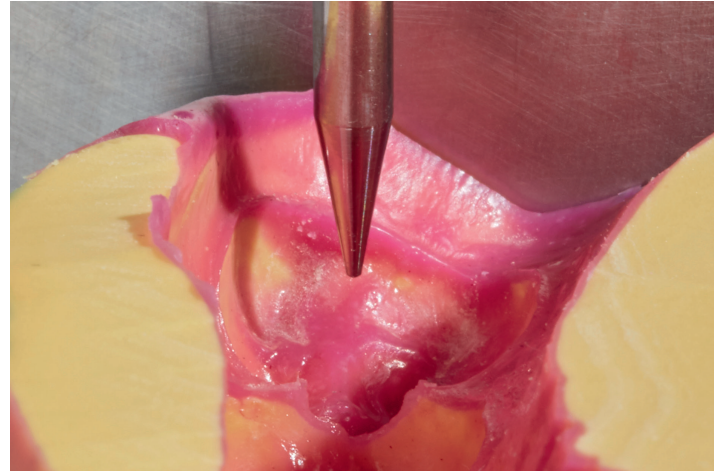
AUTO spin pin drilling unit*	1860x000
AUTO spin base plate standard	18600100
AUTO spin base plate comfort with metal disc	18600200
AUTO spin secondary plate with magnet	18600300
AUTO spin putty	18600400
AUTO spin cone pin drill	18600500
AUTO spin universal plate holder	18600600
AUTO spin universal impression holder	18600700
AUTO spin cone pin	3692000

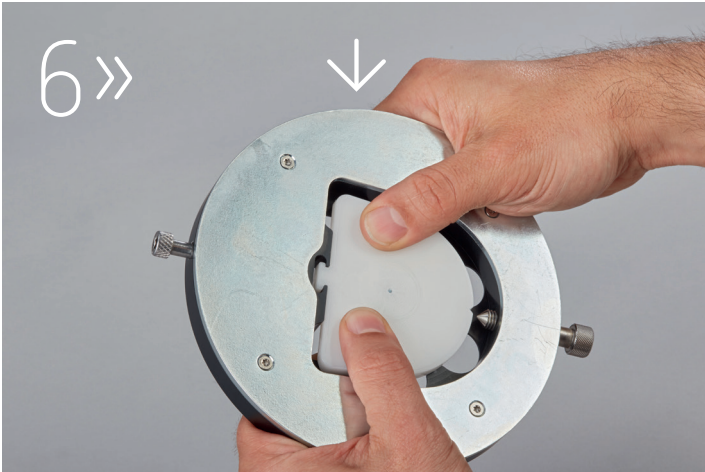
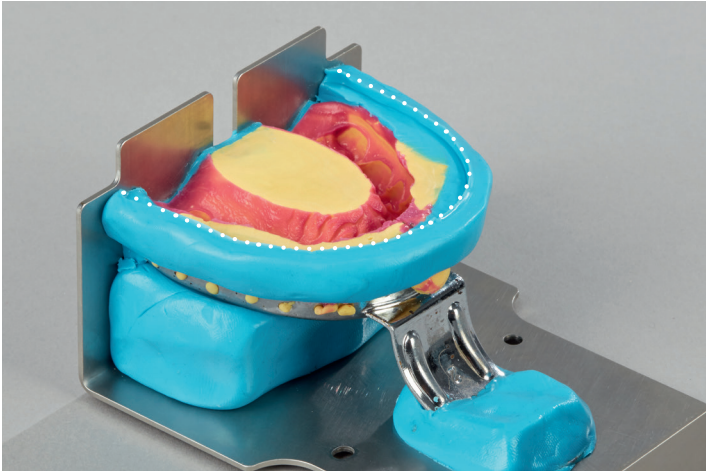
\*Available in various volt versions

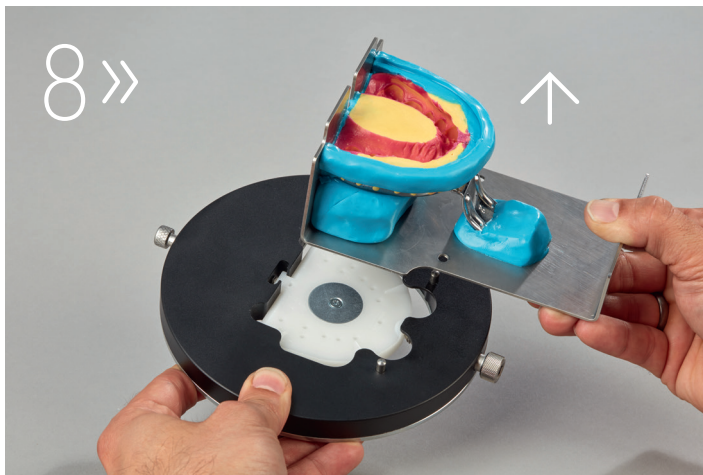
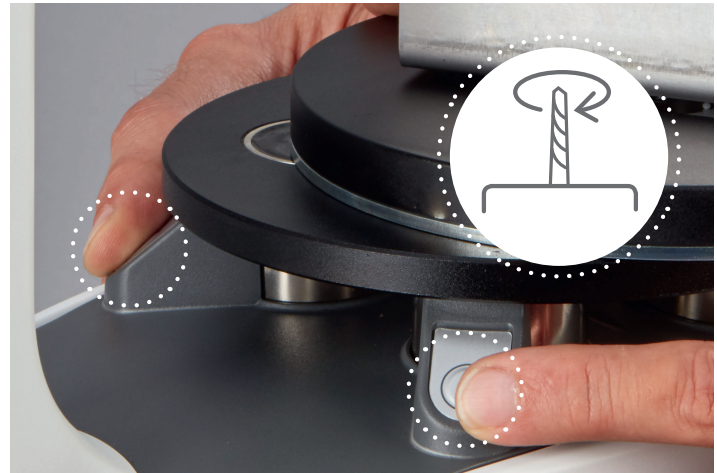
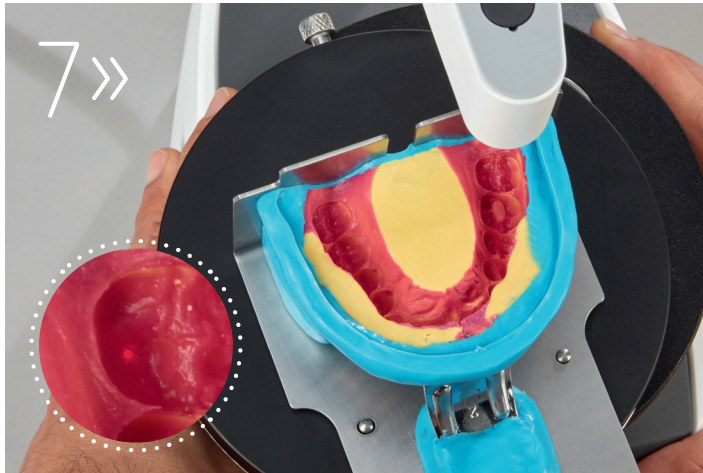




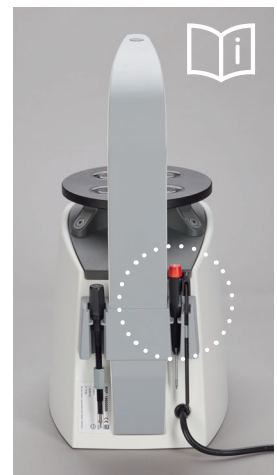
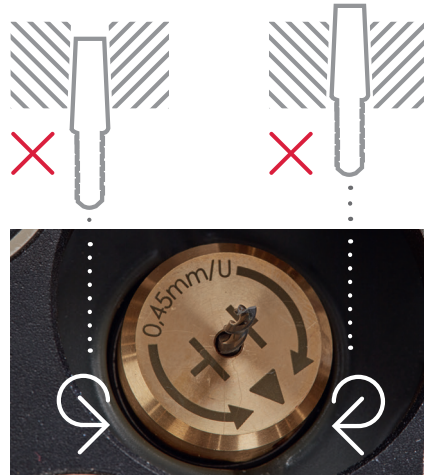
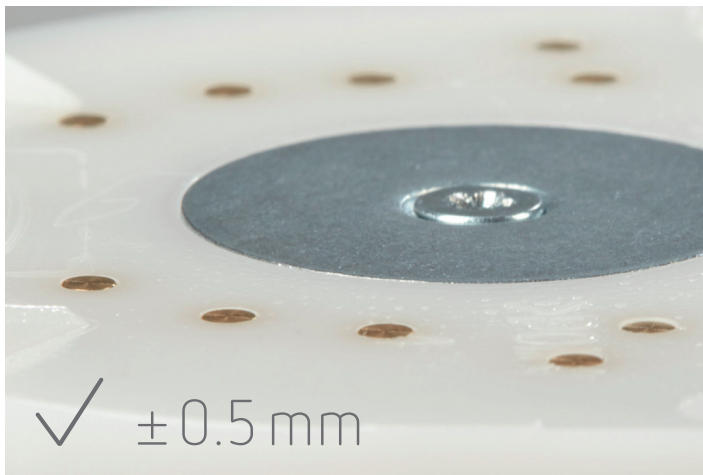
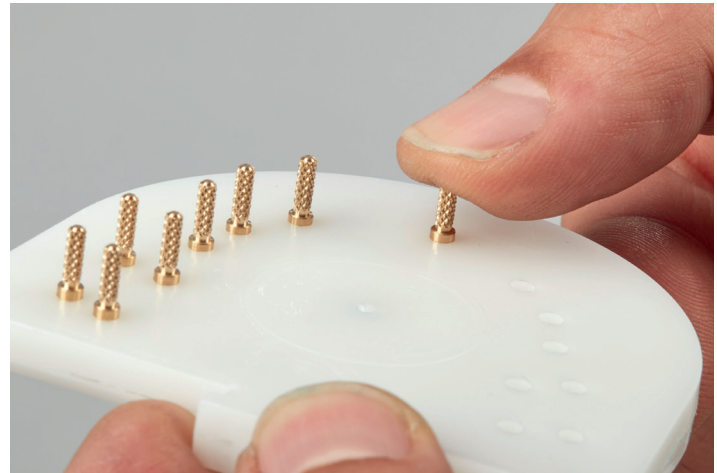
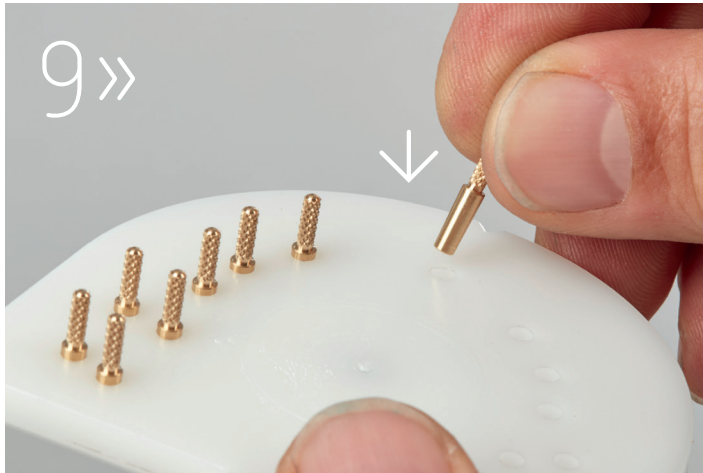


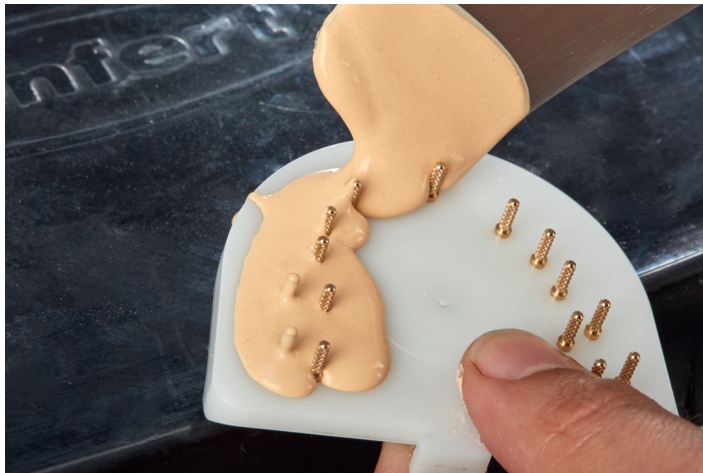
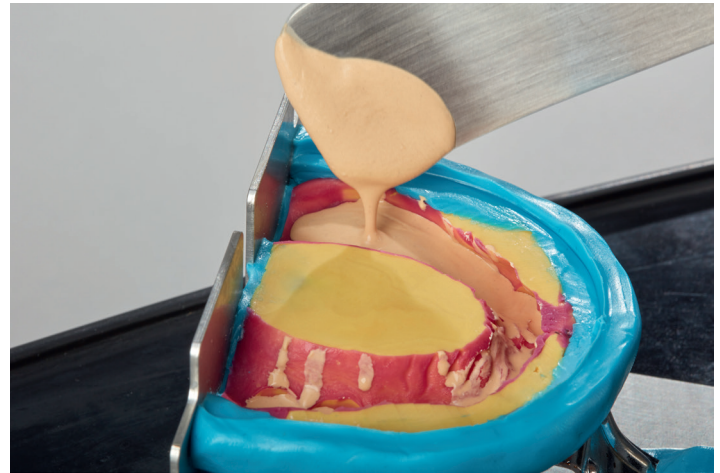
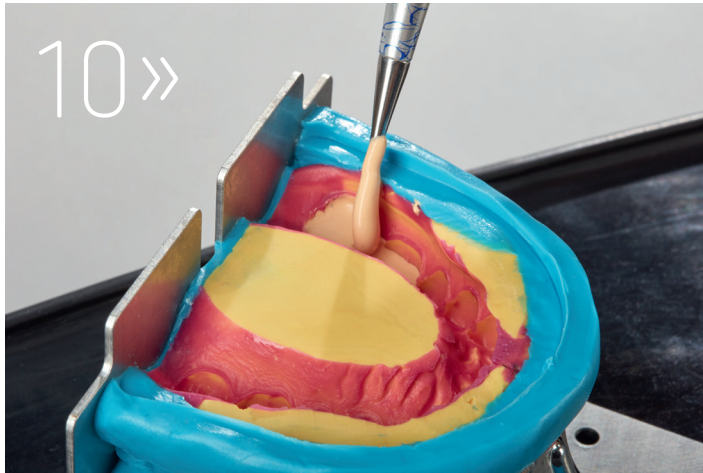


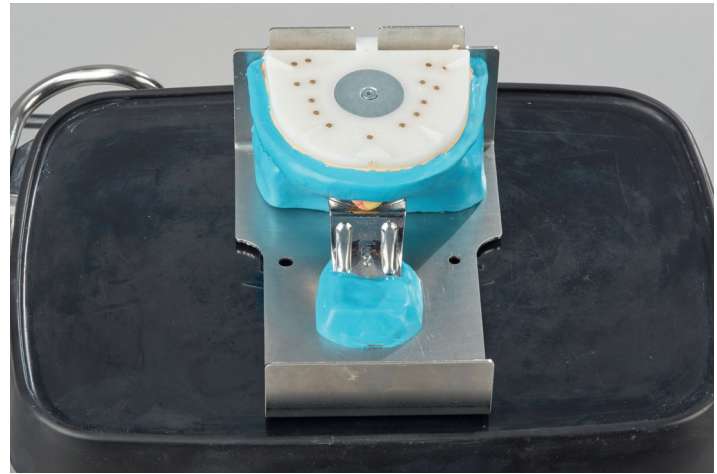
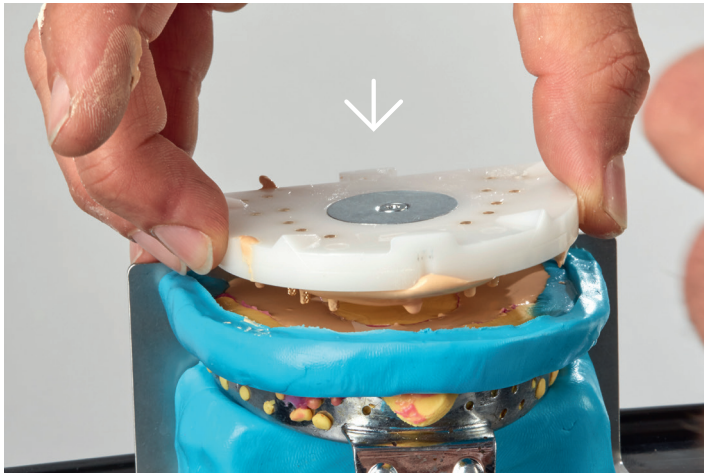


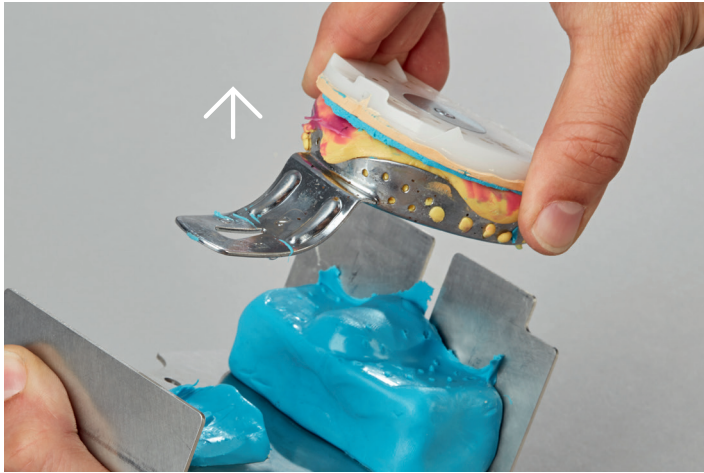


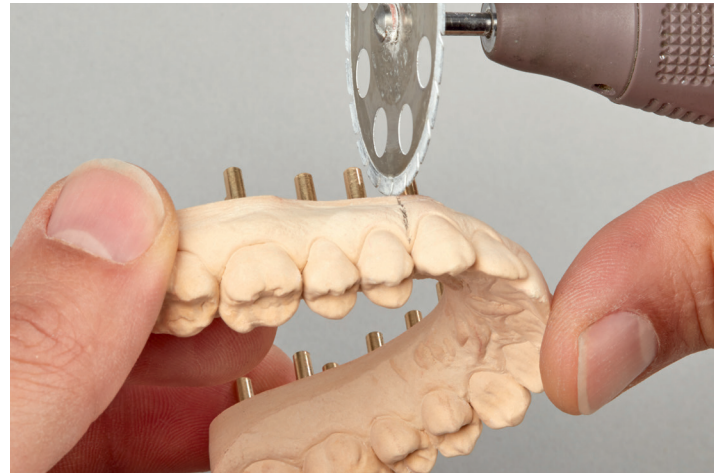
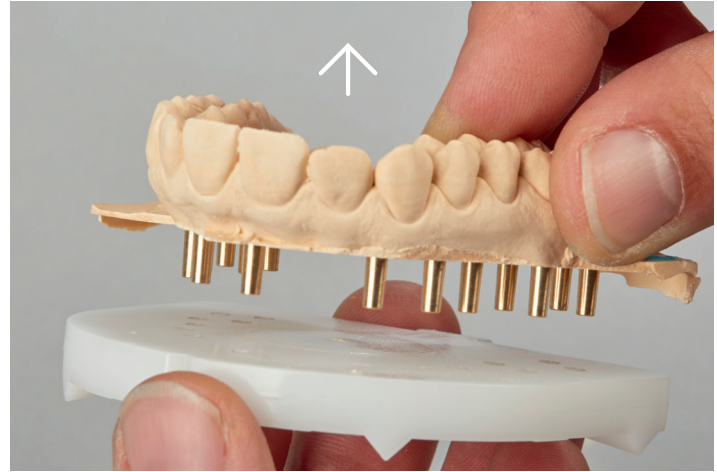






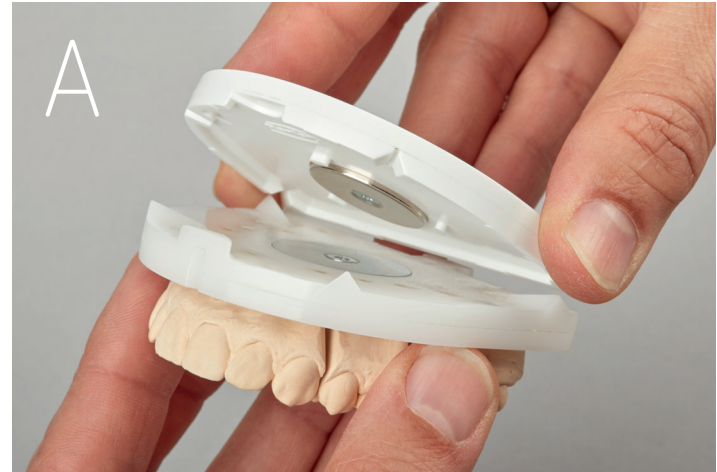








# Articulation variants





216877 717A

[renfert.com/AUTOspin](http://renfert.com/AUTOspin)

